

# Measuring The Performance of Posyandu

*by Riki Riki*

---

**Submission date:** 11-May-2022 12:31PM (UTC+0800)

**Submission ID:** 1833562677

**File name:** 15\_Measuring\_The\_Performance\_of\_Posyandu.pdf (376.8K)

**Word count:** 5952

**Character count:** 26446

# Measuring The Performance of Posyandu Cadres Using The Topsis Method

Muhamad Muslihudin<sup>1</sup>, Dian Kusmawati<sup>2</sup>, Riki<sup>3</sup>

<sup>1,2</sup>Department of Information Systems, STMIK Pringsewu, Lampung

<sup>3</sup>Department of Information System, Buddhi Dharma University, Tangerang, Banten

<sup>1,2</sup>Wisma Rini Street No. 09 Pringsewu, Lampung, Indonesia

<sup>3</sup>Imam Bonjol Street No. 41 Karawaci Ilir 15115, Tangerang, Banten, Indonesia

E-mail: [muslihudinstmikpsw@gmail.com](mailto:muslihudinstmikpsw@gmail.com)<sup>1</sup>, [diankusmawati494@gmail.com](mailto:diankusmawati494@gmail.com)<sup>2</sup>, [riki@ubd.ac.id](mailto:riki@ubd.ac.id)<sup>3</sup>

Received: 9 Maret 2021

Revised: 13 April 2021

Accepted: 25 April 2021

**Abstract**-Dijen Binakesmas posyandu Depkes RI (2009) found out that the performance of posyandu cadres decreased, it was known because the coverage of toddlers who came to posyandu fell from 60 % to 43% resulting in many children who do not receive posyandu services and can result in malnutrition. POSYANDU (Posyandu Service Post) is one form of community-based effort. The success of a posyandu is influenced by the active activities of a cadre. The TOPSIS method is one of the multicretic methods of decision making. To simplify the assessment of cadre performance using the Technique for Oorder Preference method by Similiary to Ideal Solution. The purpose of this study was to obtain a model of decision making on the posyandu cadre performance appraisal with the topsis method. The criteria that are determined include: age, education, occupation, years of service, achievements. The results of this study obtained that the alternative V6 with a value of 0.8242 was the performance of the best posyandu cadre.

**Keywords:** Performance, Posyandu Cadre, Decision Support System, TOPSIS Method.

## I. INTRODUCTION

Of the Health Service Post (POSYANDU) is a form of community-based effort (UKBM) that is managed based on, by, and for the community in addressing nutrition problems in children under five. One real example of community empowerment is the Posyandu, which is very important for the health of the community or toddlers. Whether or not a posyandu program is running is based on the performance of the cadre itself, if the posyandu cadre is active, the posyandu will run well according to what is desired. According to the Dijen Binakesmas posyandu, MOH (2009), it is known that the performance of posyandu cadres has decreased, it is known that the coverage of

under-five children coming from posyandu decreased from 60% to 43%, resulting in many children who did not receive posyandu services and could result in malnutrition [1].

According to the Minister of Home Affairs Regulation number 19 of 2011 article 1 paragraph 1 and 2 which reads: The management of posyandu is an element of the community, community institutions, community organizations, non-governmental organizations, and the business world that are selected, willing, able, to care for social services diposyandu, therefore Posyandu cadres are also called trained cadres, namely posyandu cadres who have attended training related to posyandu services[2]. Rikesda (2013) said that the activeness of posyandu cadres nationwide until 2010 had only reached 78% from 80% in 2011 reaching a wide range of program or community participation, ranging from a low of 10% to 80% [3].

Based on the research used the FMADM method in order to help and facilitate the system in assessing the performance of lecturers in higher education based on predetermined criteria. In the research [4] conducted research for cadres in empowering the community to reduce infant and under-five mortality in Indonesia. While the research that will be conducted is to measure the performance of posyandu cadres using the TOPSIS method. This research is expected to help cadre assessment to meet the criteria and weight that has been determined in order to get rewards or benefits from the village in the form of salary bonuses.

Based on the above background, the formulation of the problem obtained how to implement a decision-making system to measure the performance of posyandu cadres using the topsis method and how to determine the performance criteria for posyandu cadres.

To help improve the quality of the performance of posyandu cadres in each program. Implement assessment criteria for the performance of posyandu cadres. Select posyandu cadres to determine awards.

## II. THEORETICAL

### 2.1. The concept of decision support

Systems Decision Support Systems according to Efrain Turban (2005: 19) is an interactive computer-based system that helps users of models and data to solve unstructured problems using a combination of models, analysis techniques and information retrieval systems can help develop and evaluate suitable alternatives[5].

Decision support systems can provide informative analysis to improve the efficiency of decision making within the organization[6]. From the above definition we can conclude that the decision support system is a computer-based decision support system to solve an unstructured problem.

The stages that must be passed in the decision-making process are as follows[4]:

#### 1. Stage of Understanding (Intelligence Phase)

This stage is a search process and approach of the scope of the problem and the process of identifying problems. Input data is obtained, processed, and tested in order to identify problems.

#### 2. Design Phase

This stage is a development process and the search for alternative actions or solutions that can be taken is a representation of a simplified real event, so that a validation and verification process is needed to determine the accuracy of the model in examining existing problems.

#### 3. Choise Phase (Choise Phase)

At this stage the selection of various alternative solutions raised during the planning stage is determined or by taking into account the criteria based on the objectives to be achieved.

#### 4. Stage of Implementation (Implementation Phase)

At this stage the implementation of the system design that has been made at the design stage and the implementation of the alternative actions that have been selected during the selection phase are carried out.

### 2.2 Definition of Performance

Performance is an assessment of employees or workers systematically from a combination of ability, effort and opportunity that can be assessed from the results of the

evaluation of the work done by comparing the predetermined criteria[7].

### 2.3 Definition of Posyandu Cadre Posyandu

Cadres are a form of community participation to become cadres in the health sector who are of course trained and get health education. The role of cadres is very important as a motivator and motivator for the community, because if the cadre is not active then the posyandu process will not run smoothly[8]. The task of a cadre is to serve the community especially for children and mothers, family planning, overcoming infectious diseases, improving malnutrition, weighing toddlers, administering vitamins, and reducing mortality[9].

### 2.4 Fuzzy Multi Attribute Decision Making (Fuzzy MADM)

Fuzzy multiple attribute decision making (FMADM) [10] [4] is a method used to find alternatives from a number of alternatives with the specified criteria. The core of the FMADM method determines the weight value for each attribute, then the ranking process is carried out which will select the specified alternatives. Basically, there are 3 approaches to finding attribute weight values, namely subjective approaches, subjective approaches and integration approaches between subjective and objective. Each approach has its advantages and disadvantages.

There are several methods that can be used to solve the FMADM problem, namely:

1. *Simple Additive Weighting Method (SAW)*.
2. *Weighted Product (WP)*.
3. *ELECTRE (Elimination Et Choix Traduisat la Realite)*
4. *TOPSIS (Technique For Order Preference By Similarity To Ideal Solution)*.
5. *Analitycal Hhierarchy Process (AHP)*[11]–[13].

## III. RESEARCH METHODS

### 3.1. Data Collection

The methods that the authors do are as follows:

1. **Observation**  
Method This method is that the writer observes objects directly at the implementation of Posyandu at the head of Cipadang Village.
2. **Literature study**  
The Author utilizes theories concerning the discussion of information systems and information technology sciences, especially journals *decision support system*.
3. **Interview**  
This method the author conducted an interview with the Village Midwife regarding the Performance of Cadres in Cipadang Village.

3.2. Topsis Method

TOPSIS (Technique For Order Preference By Similarity To Ideal Solution) is one method of multicriteria decision making. Topsis was first introduced by Yoon and Hwang in 1981 used as a method in solving multicriteria problems [14], [15]. Topsis method is used to help complete decision making practically, so that it can be easily understood, the computation is efficient, and has the ability to measure the relative performance of alternative decision-making.

The steps taken in solving problems using the TOPSIS method [4]:

1. Topsis begins by building a decision matrix. The decision matrix X refers to the alternative that will be evaluated based on criteria.

$$X = \begin{pmatrix} A_1 X_{11} X_{12} X_{13} \dots X_{1n} \\ A_2 X_{21} X_{22} X_{23} \dots X_{2n} \\ A_3 X_{31} X_{32} X_{33} \dots X_{3n} \\ \dots \\ A_m X_{m1} X_{m2} X_{m3} \dots X_{mn} \end{pmatrix}$$

Where  $A_i$  ( $i = 1, 2, 3, \dots, m$ ) is an alternative that may be  $X_j$  ( $j = 1, 2, 3, \dots, n$ ) is an attribute where alternative performance is measured,  $X_{ij}$  is performance  $A_i$  with reference to attribute  $X_j$ .

2. Make a normalized decision matrix.

$$r_{ij} = \frac{x_{ij}}{\sqrt{\sum_{i=1}^m x_{ij}^2}}$$

With  $i = 1, 2, \dots, m$   
 $j = 1, 2, \dots, n$

Where:

$R_{ij}$  = normalized matrix [i] [j]  
 $X_{ij}$  = decision matrix [i] [j]

3. Making the normalized decision matrix weighted.

$$V_{ij} = w_{ij} r_{ij};$$

with  $i = 1, 2, \dots, m$ ; and  $j = 1, 2, \dots, n$ .

Where:

$V_{ij}$  = Element of normalized decision matrix weighted V

$w_{ij}$  = Weight of j-criterion

$r_{ij}$  = Matrix element normalized R

4. A positive  $A^+$  ideal solution and ideal negative solution  $A^-$  can be determined based on normalized weight rating ( $y_{ij}$ ) as:

$$A^+ = (y_1^+, y_2^+ \dots y_n^+);$$

$$A^- = (y_1^-, y_2^- \dots y_n^-);$$

Where:

$V_{ij}^+ = \max V_{ij}$  if j is the attribute of profit

$\min Y_{ij}$  if j is the cost attribute

$V_j^- = \min Y_{ij}$  if j is the attribute of the profit

$\max Y_{ij} =$  if j is the attribute cost The

5. distance between the alternative  $A_i$  and the positive ideal solution:

$$D_i^+ = \sqrt{\sum_{i=1}^n (Y_i^+ - Y_{ij})^2}$$

Where:

$D_i^+$  = Alternative distance  $A_i$  with positive ideal solution

$Y_j^+$  = positive ideal solution [i]

$Y_{ij}$  = Normalization matrix [i] [j]

6. Distance between alternatives with negative ideal solution

$$D_i^- = \sqrt{\sum_{i=1}^n (Y_{ij} - Y_j^-)^2}$$

$i = 1, 2, \dots, m$

Where:

$D_i^-$  = Alternative distance  $A_i$  with negative ideal solution

$Y_j^-$  = Negative ideal solution [i]

$Y_{ij}$  = Normalization matrix [i] [j]

7. The preference value for each alternative ( $V_i$ ) given as:

$$V_i = \frac{D_i^-}{D_i^- + D_i^+}$$

$i = 1, 2, \dots, m$

$V_i$  = proximity of each alternative to the ideal solution

$D_i^+$  =  $A_i$  with positive ideal solution

$D_i^-$  =  $A_i$  with the negative ideal solution

value  $V_i$  greater indicates that alternative  $A_i$  preferred.

**Table 1. Alternative values for each**  
**Criteria Criterion Value**

C1	Age	20%
C2	Education	25%
C3	Job	20%
C4	Work period	15%
C5	Achievement	20%
Total		100%

Source: [6] [13]

9  
**Table 2. Weight Value of**

Weight	Value
Very Low	0
Low	0.25
Enough	0.5
Good	0.75
Very Good	1

**Table 3. Age weight score (C1)**

Age	Value	Weight
<30	1	Very Good
35-40	0.75	Good
45-50	0.5	Enough
> 46	0.25	Low

**Table 4. Value of Education Weight (C2)**

Education	Value	Weight
SD	0	Very Low Middle
School	0.25	Low
SMA	0.5	Enough
D-III	0.75	Good
S1 / S2	1	Very Good

**Table 5. Value Weight of work period (C3)**

Working period	Value	Weight
<1 year	0.25	Low
2-3 years	0.75	Good
> 5 years	1	Very Good

**Table 6. Job Weight Value (C4)**

Job	Value	Weight
Unemployment (Mother RT)	1	Very Good
Self Employed	0,75	Good
PNS	0.25	Low

**Table 7. Achievement Weight Value (C5)**

Achievement	Value	Weighing
District	0.5	Enough
Province	0.75	Good
National	1	Very Good

**3.3. Research Framework**

Thought Concept Thought Concept is a diagram that outline the logic flow in a study. The framework of thought is based on research questions from several concepts that have been made. In this study, the development of decision support for the assessment of the performance of

posyandu cadres using the framework framework is as follows:

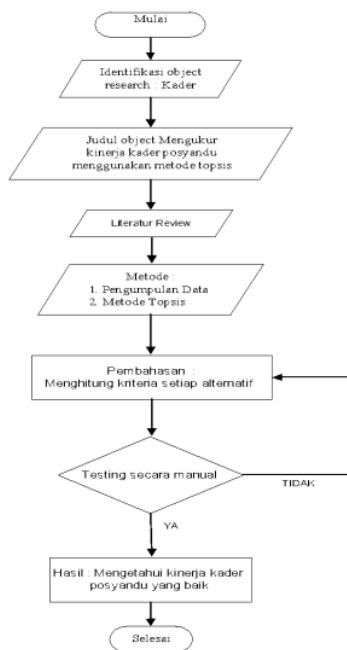


Figure 1 Research framework

**IV. DISCUSSION**

In this analysis, all data will be implemented in the form of the implementation of the TOPSIS method used.

a. The table below is a table of data on posyandu cadres that are alternative.

13 Table. 8 Decision Matrix

	C1	C2	C3	C4	C5
A1	0.5	0.25	1	1	0.5
A2	0.5	0	1	1	0.5
A3	0.25	0	1	1	0.5
A4	0.75	0.25	1	1	0.5
A5	0.75	0	1	1	0.5
A6	0.75	1	0.75	0.25	1
A7	0.75	0.5	0.75	1	0.75
A8	0.75	0.5	0.75	0.75	0.75
A9	0.5	0.5	0.75	1	0.75
A10	0.75	0.5	0.75	1	0.5
A11	0.5	0.25	1	1	0.75
A12	0.5	0,25	1	0.75	0.5
A13	0.75	0.5	1	1	1
A14	0.25	0.25	1	1	0.5
A15	0.75	0.5	1	1	1

b. After making the decision matrix the next is to make a normalized matrix on the following solution:

$$|X_1| = \frac{\sqrt{0,5^2 + 0,5^2 + 0,25^2 + 0,75^2 + 0,75^2 + 0,75^2}}{\sqrt{0,75^2 + 0,75^2 + 0,5^2 + 0,75^2 + 0,5^2 + 0,5^2}} = 2,42384$$

$$r_{11} = \frac{X_{11}}{|X_1|} = \frac{0,5}{2,42384} = 0,2062842432$$

$$r_{21} = \frac{X_{21}}{|X_1|} = \frac{0,5}{2,42384} = 0,2062842432$$

$$r_{31} = \frac{X_{31}}{|X_1|} = \frac{0,25}{2,42384} = 0,1031421216$$

$$r_{41} = \frac{X_{41}}{|X_1|} = \frac{0,75}{2,42384} = 0,3094263648$$

$$r_{51} = \frac{X_{51}}{|X_1|} = \frac{0,75}{2,42384} = 0,3094263648$$

$$r_{61} = \frac{X_{61}}{|X_1|} = \frac{0,75}{2,42384} = 0,3094263648$$

$$r_{71} = \frac{X_{71}}{|X_1|} = \frac{0,75}{2,42384} = 0,3094263648$$

$$r_{81} = \frac{X_{81}}{|X_1|} = \frac{0,75}{2,42384} = 0,3094263648$$

$$r_{91} = \frac{X_{91}}{|X_1|} = \frac{0,5}{2,42384} = 0,2062842432$$

$$r_{101} = \frac{X_{10}}{|X_1|} = \frac{0,75}{2,42384} = 0,3094263648$$

$$r_{111} = \frac{X_{11}}{|X_1|} = \frac{0,5}{2,42384} = 0,2062842432$$

$$r_{121} = \frac{X_{12}}{|X_1|} = \frac{0,5}{2,42384} = 0,2062842432$$

$$r_{131} = \frac{X_{13}}{|X_1|} = \frac{0,75}{2,42384} = 0,3094263648$$

$$r_{141} = \frac{X_{14}}{|X_1|} = \frac{0,25}{2,42384} = 0,1031421216$$

$$r_{151} = \frac{X_{15}}{|X_1|} = \frac{0,75}{2,42384} = 0,3094263648$$

$$|X_2| = \frac{\sqrt{0,25^2 + 0^2 + 0^2 + 0,25^2 + 0^2 + 1^2 + 0,5^2}}{\sqrt{0,5^2 + 0,5^2 + 0,5^2 + 0,25^2 + 0,25^2 + 0,5^2}} = 1,677051$$

$$r_{12} = \frac{X_{12}}{|X_2|} = \frac{0,25}{1,677051} = 0,149071197$$

$$r_{22} = \frac{X_{22}}{|X_2|} = \frac{0}{1,677051} = 0$$

$$r_{32} = \frac{X_{32}}{|X_2|} = \frac{0}{1,677051} = 0$$

$$r_{42} = \frac{X_{42}}{|X_2|} = \frac{0,25}{1,677051} = 0,149071197$$

$$r_{52} = \frac{X_{52}}{|X_2|} = \frac{0}{1,677051} = 0$$

$$r_{62} = \frac{X_{62}}{|X_2|} = \frac{1}{1,677051} = 0,596284788$$

$$r_{72} = \frac{X_{72}}{|X_2|} = \frac{0,5}{1,677051} = 0,298142394$$

$$r_{82} = \frac{X_{82}}{|X_2|} = \frac{0,5}{1,677051} = 0,298142394$$

$$r_{92} = \frac{X_{92}}{|X_2|} = \frac{0,5}{1,677051} = 0,298142394$$

$$r_{102} = \frac{X_{102}}{|X_2|} = \frac{0,5}{1,677051} = 0,298142394$$

$$r_{112} = \frac{X_{112}}{|X_2|} = \frac{0,25}{1,677051} = 0,149071197$$

$$r_{122} = \frac{X_{122}}{|X_2|} = \frac{0,25}{1,677051} = 0,149071197$$

$$r_{132} = \frac{X_{132}}{|X_2|} = \frac{0,5}{1,677051} = 0,298142394$$

$$r_{142} = \frac{X_{142}}{|X_2|} = \frac{0,25}{1,677051} = 0,149071197$$

$$r_{152} = \frac{X_{152}}{|X_2|} = \frac{0,5}{1,677051} = 0,298142394$$

$$|X_3| = \frac{\sqrt{1^2 + 1^2 + 1^2 + 1^2 + 1^2 + 0,75^2 + 0,75^2}}{\sqrt{0,75^2 + 0,75^2 + 0,75^2 + 1^2 + 1^2 + 1^2}} = 3,579455$$

$$r_{13} = \frac{X_{13}}{|X_3|} = \frac{1}{3,579455} = 0,2793721391$$

$$r_{23} = \frac{X_{23}}{|X_3|} = \frac{1}{3,579455} = 0,2793721391$$

$$r_{33} = \frac{X_{33}}{|X_3|} = \frac{1}{3,579455} = 0,2793721391$$

$$r_{43} = \frac{X_{43}}{|X_3|} = \frac{1}{3,579455} = 0,2793721391$$

$$r_{53} = \frac{X_{53}}{|X_3|} = \frac{1}{3,579455} = 0,2793721391$$

$$r_{63} = \frac{X_{63}}{|X_3|} = \frac{0,75}{3,579455} = 0,2095291043$$

$$r_{73} = \frac{X_{73}}{|X_3|} = \frac{0,75}{3,579455} = 0,2095291043$$

$$r_{83} = \frac{X_{83}}{|X_3|} = \frac{0,75}{3,579455} = 0,2095291043$$

$$r_{93} = \frac{X_{93}}{|X_3|} = \frac{0,75}{3,579455} = 0,2095291043$$

$$r_{103} = \frac{X_{103}}{|X_3|} = \frac{0,75}{3,579455} = 0,2095291043$$

$$r_{113} = \frac{X_{113}}{|X_3|} = \frac{1}{3,579455} = 0,2793721391$$

$$r_{123} = \frac{X_{123}}{|X_3|} = \frac{1}{3,579455} = 0,2793721391$$

$$r_{133} = \frac{X_{133}}{|X_3|} = \frac{1}{3,579455} = 0,2793721391$$

$$r_{143} = \frac{X_{143}}{|X_3|} = \frac{1}{3,579455} = 0,2793721391$$

$$r_{153} = \frac{X_{153}}{|X_3|} = \frac{1}{3,579455} = 0,2793721391$$

$$|X_4| = \frac{1}{\sqrt{1^2 + 1^2 + 1^2 + 1^2 + 1^2 + 0,25^2 + 1^2 + 0,75^2}} \\ = \frac{1}{\sqrt{1^2 + 1^2 + 1^2 + 0,75^2 + 1^2 + 1^2 + 1^2}} \\ = 3,63146$$

$$r_{14} = \frac{X_{14}}{|X_4|} = \frac{1}{3,63146} = 0,2753713382$$

$$r_{24} = \frac{X_{24}}{|X_4|} = \frac{1}{3,63146} = 0,2753713382$$

$$r_{34} = \frac{X_{34}}{|X_4|} = \frac{1}{3,63146} = 0,2753713382$$

$$r_{44} = \frac{X_{44}}{|X_4|} = \frac{1}{3,63146} = 0,2753713382$$

$$r_{54} = \frac{X_{54}}{|X_4|} = \frac{1}{3,63146} = 0,2753713382$$

$$r_{64} = \frac{X_{64}}{|X_4|} = \frac{0,25}{3,63146} = 0,0688428346$$

$$r_{74} = \frac{X_{74}}{|X_4|} = \frac{1}{3,63146} = 0,2753713382$$

$$r_{84} = \frac{X_{84}}{|X_4|} = \frac{0,75}{3,63146} = 0,2065285037$$

$$r_{94} = \frac{X_{94}}{|X_4|} = \frac{1}{3,63146} = 0,2753713382$$

$$r_{104} = \frac{X_{104}}{|X_4|} = \frac{1}{3,63146} = 0,2753713382$$

$$r_{114} = \frac{X_{114}}{|X_4|} = \frac{1}{3,63146} = 0,2753713382$$

$$r_{124} = \frac{X_{124}}{|X_4|} = \frac{0,75}{3,63146} = 0,2065285037$$

$$r_{134} = \frac{X_{134}}{|X_4|} = \frac{1}{3,63146} = 0,2753713382$$

$$r_{144} = \frac{X_{144}}{|X_4|} = \frac{1}{3,63146} = 0,2753713382$$

$$r_{154} = \frac{X_{154}}{|X_4|} = \frac{1}{3,63146} = 0,2753713382$$

$$|X_5| = \frac{1}{\sqrt{0,5^2 + 0,5^2 + 0,5^2 + 0,5^2 + 0,5^2 + 1^2 + 0,75^2 + 0,75^2 + 0,75^2 + 0,5^2 + 0,75^2 + 0,75^2 + 1^2 + 0,5^2 + 1^2 + 0,5^2 + 1^2}} \\ = 2,692582$$

$$r_{15} = \frac{X_{15}}{|X_5|} = \frac{0,5}{2,692582} = 0,185695366$$

$$r_{25} = \frac{X_{25}}{|X_5|} = \frac{0,5}{2,692582} = 0,185695366$$

$$r_{35} = \frac{X_{35}}{|X_5|} = \frac{0,5}{2,692582} = 0,185695366$$

$$r_{45} = \frac{X_{45}}{|X_5|} = \frac{0,5}{2,692582} = 0,185695366$$

$$r_{55} = \frac{X_{55}}{|X_5|} = \frac{0,5}{2,692582} = 0,185695366$$

$$r_{65} = \frac{X_{65}}{|X_5|} = \frac{1}{2,692582} = 0,371390732$$

$$r_{75} = \frac{X_{75}}{|X_5|} = \frac{0,75}{2,692582} = 0,278543049$$

$$r_{85} = \frac{X_{85}}{|X_5|} = \frac{0,75}{2,692582} = 0,278543049$$

$$r_{95} = \frac{X_{95}}{|X_5|} = \frac{0,75}{2,692582} = 0,278543049$$

$$r_{105} = \frac{X_{105}}{|X_5|} = \frac{0,5}{2,692582} = 0,185695366$$

$$r_{115} = \frac{X_{115}}{|X_5|} = \frac{0,75}{2,692582} = 0,278543049$$

$$r_{125} = \frac{X_{125}}{|X_5|} = \frac{0,5}{2,692582} = 0,185695366$$

$$r_{135} = \frac{X_{135}}{|X_5|} = \frac{1}{2,692582} = 0,371390732$$

$$r_{145} = \frac{X_{145}}{|X_5|} = \frac{0,5}{2,692582} = 0,185695366$$

$$r_{155} = \frac{x_{155}}{|x_5|} = \frac{1}{2,692582} = 0,371390732$$

From the results of the aboveobtained normalized matrix (R):

$$R = \begin{bmatrix} 0,2062 & 0,1490 & 0,2793 & 0,2753 & 0,1856 \\ 0,2062 & 0 & 0,2793 & 0,2753 & 0,1856 \\ 0,1031 & 0 & 0,2793 & 0,2753 & 0,1856 \\ 0,3094 & 0,1490 & 0,2793 & 0,2753 & 0,1856 \\ 0,3094 & 0 & 0,2793 & 0,2753 & 0,1856 \\ 0,3094 & 0,5962 & 0,2095 & 0,0688 & 0,3713 \\ 0,3094 & 0,2981 & 0,2095 & 0,2753 & 0,2785 \\ 0,3094 & 0,2981 & 0,2095 & 0,2065 & 0,2785 \\ 0,2062 & 0,2981 & 0,2095 & 0,2753 & 0,2785 \\ 0,3094 & 0,2981 & 0,2095 & 0,2753 & 0,1856 \\ 0,2062 & 0,1490 & 0,2793 & 0,2753 & 0,2785 \\ 0,2062 & 0,1490 & 0,2793 & 0,2065 & 0,1856 \\ 0,3094 & 0,2981 & 0,2793 & 0,2753 & 0,3713 \\ 0,1031 & 0,1490 & 0,2793 & 0,2753 & 0,1856 \\ 0,3094 & 0,2981 & 0,2793 & 0,2753 & 0,3713 \end{bmatrix}$$

$$V_{32} = W_2 r_{32} = (0,25) (0) = 0$$

$$V_{33} = W_3 r_{33} = (0,20) (0,2793) = 0,0558$$

$$V_{34} = W_4 r_{34} = (0,15) (0,2753) = 0,0412$$

$$V_{35} = W_5 r_{35} = (0,20) (0,1856) = 0,0371$$

$$V_{41} = W_1 r_{41} = (0,20) (0,3094) = 0,0618$$

$$V_{42} = W_2 r_{42} = (0,25) (0,1490) = 0,0372$$

$$V_{43} = W_3 r_{43} = (0,20) (0,2793) = 0,0558$$

$$V_{44} = W_4 r_{44} = (0,15) (0,2753) = 0,0412$$

$$V_{45} = W_5 r_{45} = (0,20) (0,1856) = 0,0371$$

$$V_{51} = W_1 r_{51} = (0,20) (0,3094) = 0,0618$$

$$V_{52} = W_2 r_{52} = (0,25) (0) = 0$$

$$V_{53} = W_3 r_{53} = (0,20) (0,2793) = 0,0558$$

$$V_{54} = W_4 r_{54} = (0,15) (0,2753) = 0,0412$$

$$V_{55} = W_5 r_{55} = (0,20) (0,1856) = 0,0371$$

$$V_{61} = W_1 r_{61} = (0,20) (0,3094) = 0,0618$$

$$V_{62} = W_2 r_{62} = (0,25) (0,5963) = 0,1490$$

$$V_{63} = W_3 r_{63} = (0,20) (0,2095) = 0,0419$$

$$V_{64} = W_4 r_{64} = (0,15) (0,0688) = 0,0103$$

$$V_{65} = W_5 r_{65} = (0,20) (0,3714) = 0,0742$$

$$V_{71} = W_1 r_{71} = (0,20) (0,3094)$$

After obtaining normalized matrix (R), then look for matrix V based on the equation:

$$V_{ij} = W_j X_{ij}$$

$$V_{11} = W_1 r_{11} = (0,2) (0,2062) = 0,0412$$

$$V_{12} = W_2 r_{12} = (0,25) (0,1490) = 0,0372$$

$$V_{13} = W_3 r_{13} = (0,20) (0,2793) = 0,0558$$

$$V_{14} = W_4 r_{14} = (0,15) (0,2753) = 0,0412$$

$$V_{15} = W_5 r_{15} = (0,20) (0,1856) = 0,0371$$

$$V_{21} = W_1 r_{21} = (0,20) (0,2062) = 0,0412$$

$$V_{22} = W_2 r_{22} = (0,25) (0) = 0$$

$$V_{23} = W_3 r_{23} = (0,20) (0,2793) = 0,0558$$

$$V_{24} = W_4 r_{24} = (0,15) (0,2753) = 0,0412$$

$$V_{25} = W_5 r_{25} = (0,20) (0,1856) = 0,0371$$

$$V_{31} = W_1 r_{31} = (0,20) (0,1031) = 0,0206$$

	= 0,06188	$V_{111} = W_1r_{111}$	= (0,20) (0,2062)
			= 0,0412
$V_{72} = W_2r_{72}$	= (0,25) (0,2981)	$V_{112} = W_2r_{112}$	= (0,25) (0,1490)
	= 0,0745		= 0,0372
$V_{73} = W_3r_{73}$	= (0,20) (0,2095)	$V_{113} = W_3r_{113}$	= (0,20) (0,2793)
	= 0,0419		= 0,0558
$V_{74} = W_4r_{74}$	= (0,15) (0,2753)	$V_{114} = W_4r_{114}$	= (0,15) (0,2753)
	= 0,0412		= 0,0412
$V_{75} = W_5r_{75}$	= (0,20) (0,2785)	$V_{115} = W_5r_{115}$	= (0,20) (0,2785)
	= 0,0557		= 0,0557
$V_{81} = W_1r_{81}$	= (0,20) (0,3094)	$V_{121} = W_1r_{121}$	= (0,20) (0,2062)
	= 0,0618		= 0,0412
$V_{82} = W_2r_{82}$	= (0,25) (0,2981)	$V_{122} = W_2r_{122}$	= (0,25) (0,1490)
	= 0,0745		= 0,0372
$V_{83} = W_3r_{83}$	= (0,20) (0,2095)	$V_{123} = W_3r_{123}$	= (0,20) (0,2793)
	= 0,0419		= 0,0558
$V_{84} = W_4r_{84}$	= (0,15) (0,2065)	$V_{124} = W_4r_{124}$	= (0,15) (0,2065)
	= 0,0309		= 0,0309
$V_{85} = W_5r_{85}$	= (0,20) (0,2785)	$V_{125} = W_5r_{125}$	= (0,20) (0,1856)
	= 0,0557		= 0,0371
$V_{91} = W_1r_{91}$	= (0,20) (0,2062)	$V_{131} = W_1r_{131}$	= (0,20) (0,3094)
	= 0,0412		= 0,0618
$V_{92} = W_2r_{92}$	= (0,25) (0,2981)	$V_{132} = W_2r_{132}$	= (0,25) (0,2981)
	= 0,0745		= 0,0745
$V_{93} = W_3r_{93}$	= (0,20) (0,2095)	$V_{133} = W_3r_{133}$	= (0,20) (0,2793)
	= 0,0419		= 0,0558
$V_{94} = W_4r_{94}$	= (0,15) (0,2753)	$V_{134} = W_4r_{134}$	= (0,15) (0,2753)
	= 0,0412		= 0,0412
$V_{95} = W_5r_{95}$	= (0,20) (0,2785)	$V_{135} = W_5r_{135}$	= (0,20) (0,3713)
	= 0,0557		= 0,0742
$V_{101} = W_1r_{101}$	= (0,20) (0,3094)	$V_{141} = W_1r_{141}$	= (0,20) (0,1031)
	= 0,0618		= 0,0206
$V_{102} = W_2r_{102}$	= (0,25) (0,2981)	$V_{142} = W_2r_{142}$	= (0,25) (0,1490)
	= 0,0745		= 0,0372
$V_{103} = W_3r_{103}$	= (0,20) (0,2095)	$V_{143} = W_3r_{143}$	= (0,20) (0,2793)
	= 0,0419		= 0,0558
$V_{104} = W_4r_{104}$	= (0,15) (0,2753)	$V_{144} = W_4r_{144}$	= (0,15) (0,2753)
	= 0,0412		= 0,0412
$V_{105} = W_5r_{105}$	= (0,20) (0,1857)	$V_{145} = W_5r_{145}$	= (0,20) (0,1856)
	= 0,0371		

$$= 0,0371$$

$$V_{151} = W_1 r_{151} = (0.20) (0.3094) = 0.0618$$

$$V_{152} = W_2 r_{152} = (0.25) (0.2981) = 0.0745$$

$$V_{153} = W_3 r_{153} = (0.20) (0.2793) = 0.0558$$

$$V_{154} = W_4 r_{154} = (0.15) (0.2753) = 0.0412$$

$$V_{155} = W_5 r_{155} = (0.20) (0.3713) = 0,0742$$

2  
 From the above calculation, the matrix Y

$$Y = \begin{pmatrix} 0,0412 & 0,0372 & 0,0558 & 0,0412 & 0,0371 \\ 0,0412 & 0 & 0,0558 & 0,0412 & 0,0371 \\ 0,0206 & 0 & 0,0558 & 0,0412 & 0,0371 \\ 0,0618 & 0,0372 & 0,0558 & 0,0412 & 0,0371 \\ 0,0618 & 0 & 0,0558 & 0,0103 & 0,0371 \\ 0,0618 & 0,1490 & 0,0419 & 0,0412 & 0,0742 \\ 0,0618 & 0,0745 & 0,0419 & 0,0309 & 0,0557 \\ 0,0618 & 0,0745 & 0,0419 & 0,0412 & 0,0557 \\ 0,0412 & 0,0745 & 0,0419 & 0,0412 & 0,0557 \\ 0,0618 & 0,0745 & 0,0419 & 0,0412 & 0,0371 \\ 0,0412 & 0,0372 & 0,0558 & 0,0412 & 0,0558 \\ 0,0412 & 0,0372 & 0,0558 & 0,0309 & 0,0371 \\ 0,0618 & 0,0745 & 0,0558 & 0,0412 & 0,0742 \\ 0,0206 & 0,0372 & 0,0558 & 0,0412 & 0,0371 \\ 0,0618 & 0,0745 & 0,0558 & 0,0412 & 0,0742 \end{pmatrix}$$

3  
 Positive ideal solutions are calculated based on the equation:

$$A^+ = (y_1^+, y_2^+ \dots y_n^+)$$

$$y_1^+ = \max \{0.0412; 0.0412; 0.0206; 0.0618; 0.0618; 0.0618; 0.0618; 0.0412; 0.0618; 0.0412; 0.0412; 0.0618; 0.0206; 0.0618\} = 0.0618$$

$$y_2^+ = \max \{0.0372; 0; 0; 0.0372; 0; 0.1490; 0.0745; 0.0745; 0.0745; 0.0745; 0.0372; 0.0372; 0.0745; 0.0372; 0.0745\} = 0,1490$$

$$y_3^+ = \max \{0,0558; 0,0558; 0,0558; 0,0558; 0,0558; 0,0419; 0,0419; 0,0419; 0,0419; 0,0419; 0,0558; 0,0558; 0,0558; 0,0558; 0,0558\} = 0,0558$$

$$y_4^+ = \max \{0,0412; 0,0412; 0,0412; 0,0412; 0,0412; 0,0412; 0,0103; 0,0412; 0,0309; 0,0412; 0,0412; 0,0412; 0,0309; 0,0412; 0,0412\}$$

$$\{0.0412; 0.0412; 0.0309; 0.0412; 0.0412; 0.0412\} = 0.0413$$

$$y_5^+ = \max \{0.0371; 0.0371; 0.0371; 0.0371; 0.0371; 0.0742; 0.0557; 0.0557; 0.0557; 0.0371; 0.0557; 0.0371; 0.0742; 0.0371; 0.0742\} = 0,0742$$

$$A^+ = \{0.0618; 0.1490; 0.0558; 0.0412; 0.0742\}$$

4  
 The negative ideal solution is calculated based on the equation:

$$y^- = (y_1^-, y_2^- \dots y_n^-)$$

$$y_1^- = \min \{0,0412; 0,0412; 0,0206; 0,0618; 0,0618; 0,0618; 0,0618; 0,0618; 0,0412; 0,0618; 0,0412; 0,0412; 0,0618; 0,0206; 0,0618\} = 0.0206$$

$$y_2^- = \min \{0.0372; 0; 0; 0.0372; 0; 0.1490; 0.0745; 0.0745; 0.0745; 0.0745; 0.0372; 0.0372; 0.0745; 0.0372; 0.0745\} = 0$$

$$y_3^- = \min \{0,0558; 0,0558; 0,0558; 0,0558; 0,0558; 0,0419; 0,0419; 0,0419; 0,0419; 0,0419; 0,0558; 0,0558; 0,0558; 0,0558; 0,0558\} = 0.0419$$

$$y_4^- = \min \{0,0412; 0,0412; 0,0412; 0,0412; 0,0412; 0,0103; 0,0412; 0,0309; 0,0412; 0,0412; 0,0412; 0,0412; 0,0309; 0,0412; 0,0412; 0,0412\} = 0.0103$$

$$y_5^- = \min \{0.0371; 0.0371; 0.0371; 0.0371; 0.0371; 0.0742; 0.0557; 0.0557; 0.0557; 0.0371; 0.0557; 0.0371; 0.0742; 0.0371; 0.0742\} = 0.0371$$

$$A^- = \{0.0206; 0; 0.0419; 0.0103; 0.0371\}$$

5  
 The distance between the weighted value of each alternative to the positive ideal solution is calculated based on the equation:

$$D_i^+ = \sqrt{\sum_{j=1}^n (Y_i^+ - Y_{ij})^2}$$

$$D_1^+ = \sqrt{(0.0412 - 0.0618)^2 + (0.0372 - 0.1490)^2 + (0.0558 - 0.0558)^2 + (0.0412 - 0.0412)^2 + (0.0371 - 0.0742)^2} = \sqrt{0.014305} = 0.1196$$

$$D_2^+ = \sqrt{(0.0412 - 0.0618)^2 + (0 - 0.1490)^2 + \dots}$$

$$\frac{(0,0558 - 0,0558)^2 + (0,0412 - 0,0412)^2 + (0,0371 - 0,0742)^2}{(0,0371 - 0,0742)^2} = \sqrt{0,0204027} = 0,1550$$

$$D_3^+ = \frac{\sqrt{(0,0206 - 0,0618)^2 + (0 - 0,1490)^2 + (0,0558 - 0,0558)^2 + (0,0413 - 0,0413)^2 + (0,0371 - 0,0742)^2}}{(0,0371 - 0,0742)^2} = \sqrt{0,025304} = 0,1590$$

$$D_4^+ = \frac{\sqrt{(0,0618 - 0,0618)^2 + (0,0372 - 0,1490)^2 + (0,0558 - 0,0558)^2 + (0,0413 - 0,0413)^2 + (0,0371 - 0,0742)^2}}{(0,0371 - 0,0742)^2} = \sqrt{0,013879} = 0,1178$$

$$D_5^+ = \frac{\sqrt{(0,0618 - 0,0618)^2 + (0 - 0,1490)^2 + (0,0558 - 0,0558)^2 + (0,0412 - 0,0412)^2 + (0,0371 - 0,0742)^2}}{(0,0371 - 0,0742)^2} = \sqrt{0,023602} = 0,1536$$

$$D_6^+ = \frac{\sqrt{(0,0618 - 0,0618)^2 + (0,1490 - 0,1490)^2 + (0,0419 - 0,0558)^2 + (0,0103 - 0,0412)^2 + (0,0742 - 0,0742)^2}}{(0,0742 - 0,0742)^2} = \sqrt{0,001155} = 0,0339$$

$$D_7^+ = \frac{\sqrt{(0,0618 - 0,0618)^2 + (0,0745 - 0,1490)^2 + (0,0419 - 0,0558)^2 + (0,0412 - 0,0412)^2 + (0,0557 - 0,0742)^2}}{(0,0557 - 0,0742)^2} = \sqrt{0,006096} = 0,0780$$

$$D_8^+ = \frac{\sqrt{(0,0618 - 0,0618)^2 + (0,0745 - 0,1490)^2 + (0,0419 - 0,0558)^2 + (0,0309 - 0,0412)^2 + (0,0557 - 0,0742)^2}}{(0,0557 - 0,0742)^2} = \sqrt{0,066202} = 0,0787$$

$$D_9^+ = \frac{\sqrt{(0,0412 - 0,0618)^2 + (0,0745 - 1490)^2 + \sqrt{(0,0419 - 0,0558)^2 + (0,0412 - 0,0412)^2 + (0,0557 - 0,0745)^2}}}{(0,0557 - 0,0745)^2} = \sqrt{0,006521} = 0,0807$$

$$D_{10}^+ = \frac{\sqrt{(0,0618 - 0,0618)^2 + (0,0745 - 0,1490)^2 + (0,0419 - 0,0558)^2 + (0,0412 - 0,0412)^2 + (0,0371 - 0,0742)^2}}{(0,0371 - 0,0742)^2} = \sqrt{0,00713} = 0,0844$$

$$D_{11}^+ = \frac{\sqrt{(0,0412 - 0,0618)^2 + (0,0372 - 0,1490)^2 + (0,0558 - 0,0558)^2 + (0,0412 - 0,0412)^2 + (0,0371 - 0,0742)^2}}{(0,0371 - 0,0742)^2} = \sqrt{0,01327} = 0,1151$$

$$D_{12}^+ = \frac{\sqrt{(0,0412 - 0,0618)^2 + (0,0372 - 0,1490)^2 + (0,0558 - 0,0558)^2 + (0,0309 - 0,0412)^2 + (0,0371 - 0,0742)^2}}{(0,0371 - 0,0742)^2} = \sqrt{0,014411} = 0,1200$$

$$D_{13}^+ = \frac{\sqrt{(0,0618 - 0,0618)^2 + (0,0745 - 0,1490)^2 + (0,0558 - 0,0558)^2 + (0,0412 - 0,0412)^2 + (0,0742 - 0,0742)^2}}{(0,0742 - 0,0742)^2} = \sqrt{0,005556} = 0,0745$$

$$D_{14}^+ = \frac{\sqrt{(0,0206 - 0,0618)^2 + (0,0372 - 0,1490)^2 + (0,0558 - 0,0558)^2 + (0,0412 - 0,0412)^2 + (0,0371 - 0,0742)^2}}{(0,0371 - 0,0742)^2} = \sqrt{0,015381} = 0,1248$$

$$D_{15}^+ = \frac{\sqrt{(0,0618 - 0,0618)^2 + (0,0745 - 0,1490)^2 + (0,0558 - 0,0558)^2 + (0,0412 - 0,0412)^2 + (0,0742 - 0,0742)^2}}{(0,0742 - 0,0742)^2} = \sqrt{0,005556} = 0,0745$$

$$D_{16}^+ = \frac{\sqrt{(0,0618 - 0,0618)^2 + (0,0745 - 0,1490)^2 + (0,0558 - 0,0558)^2 + (0,0412 - 0,0412)^2 + (0,0742 - 0,0742)^2}}{(0,0742 - 0,0742)^2} = \sqrt{0,005556} = 0,0745$$

distance between the values weighted for each alternative to the alternative to the negative ideal solution calculated based on the equation:

$$D_i^- = \sqrt{\sum_{i=1}^n (Y_i^+ - Y_{ij})^2}$$

$$D_1^- = \frac{\sqrt{(0,0412 - 0,0206)^2 + (0,0372 - 0)^2 + (0,0558 - 0,0419)^2 + (0,0412 - 0,0103)^2 + (0,0371 - 0,0371)^2}}{(0,0371 - 0,0371)^2} = \sqrt{0,002969} = 0,0544$$

$$D_2^- = \frac{\sqrt{(0,0412 - 0,0206)^2 + (0 - 0)^2 + (0,0558 - 0,0419)^2 + (0,0412 - 0,0103)^2 + (0,0371 - 0,0371)^2}}{(0,0371 - 0,0371)^2} = \sqrt{0,00158} = 0,0397$$

$$D_3^- = \frac{\sqrt{(0,0206 - 0,0206)^2 + (0 - 0)^2 + (0,0558 - 0,0419)^2 + (0,0412 - 0,0103)^2 + (0,0371 - 0,0371)^2}}{(0,0371 - 0,0371)^2} = \sqrt{0,001155} = 0,0339$$

$$D_4^- = \frac{\sqrt{(0,0206 - 0,0206)^2 + (0,0372 - 0)^2 + (0,0558 - 0,0419)^2 + (0,0412 - 0,0103)^2 + (0,0371 - 0,0371)^2}}{(0,0371 - 0,0371)^2} = \sqrt{0,004246} = 0,0651$$

$$D_5^- = \frac{\sqrt{(0,0618 - 0,0206)^2 + (0 - 0)^2 + (0,0558 - 0,0419)^2 + (0,0412 - 0,0103)^2 + (0,0371 - 0,0371)^2}}{(0,0371 - 0,0371)^2} = \sqrt{0,002857} = 0,0534$$

$$D_6^- = \frac{\sqrt{(0,0618 - 0,0206)^2 + (0,1490 - 0)^2 + (0,0419 - 0,0419)^2 + (0,0103 - 0,0103)^2 + (0,0742 - 0,0371)^2}}{(0,0742 - 0,0371)^2} = \sqrt{0,025304} = 0,1590$$

$$D_7^- = \frac{\sqrt{(0,0618 - 0,0206)^2 + (0,0745 - 0)^2 + (0,0419 - 0,0419)^2 + (0,0412 - 0,0103)^2 + (0,0557 - 0,0371)^2}}{(0,0557 - 0,0371)^2} = \sqrt{0,008562} = 0,0925$$

$$D_8^- = \frac{\sqrt{(0,0618 - 0,0206)^2 + (0,0745 - 0)^2 + (0,0419 - 0,0419)^2 + (0,0309 - 0,0103)^2 + (0,0557 - 0,0371)^2}}{(0,0557 - 0,0371)^2} = \sqrt{0,008029} = 0,0896$$

$$D_9^- = \frac{\sqrt{(0,0412 - 0,0206)^2 + (0,0745 - 0)^2 + (0,0419 - 0,0419)^2 + (0,0412 - 0,0103)^2 + (0,0557 - 0,0371)^2}}{(0,0557 - 0,0371)^2} = \sqrt{0,007286} = 0,0853$$

$$D_{10}^- = \frac{\sqrt{(0,0618 - 0,0206)^2 + (0,0745 - 0)^2 + (0,0419 - 0,0419)^2 + (0,0412 - 0,0103)^2 + (0,0371 - 0,0371)^2}}{(0,0371 - 0,0371)^2} = \sqrt{0,008217} = 0,0906$$

$$D_{11}^- = \frac{\sqrt{(0,0412 - 0,0206)^2 + (0,0372 - 0)^2 + (0,0558 - 0,0419)^2 + (0,0412 - 0,0103)^2 + (0,0557 - 0,0371)^2}}{(0,0557 - 0,0371)^2} = \sqrt{0,003314} = 0,0575$$

$$D_{12}^- = \frac{\sqrt{(0,0412 - 0,0206)^2 + (0,0372 - 0)^2 + (0,0558 - 0,0419)^2 + (0,0412 - 0,0103)^2 + (0,0371 - 0,0371)^2}}{(0,0371 - 0,0371)^2} = \sqrt{0,002436} = 0,0493$$

$$D_{13}^- = \frac{\sqrt{(0,0618 - 0,0206)^2 + (0,0745 - 0)^2 + (0,0558 - 0,0419)^2 + (0,0412 - 0,0103)^2 + (0,0742 - 0,0371)^2}}{(0,0742 - 0,0371)^2} = \sqrt{0,009792} = 0,0989$$

$$D_{14}^- = \frac{\sqrt{(0,0206 - 0,0206)^2 + (0,0372 - 0)^2 + (0,0558 - 0,0419)^2 + (0,0412 - 0,0103)^2 + (0,0371 - 0,0371)^2}}{(0,0371 - 0,0371)^2} = \sqrt{0,002544} = 0,0504$$

$$D_{15}^- = \frac{\sqrt{(0,0618 - 0,0206)^2 + (0,0745 - 0)^2 + (0,0558 - 0,0419)^2 + (0,0412 - 0,0103)^2 + (0,0742 - 0,0371)^2}}{(0,0742 - 0,0371)^2} = \sqrt{0,009792} = 0,0989$$

2  
 The proximity of each alternative to the ideal solution is calculated based on the equation:

$$V_i = \frac{D_i^-}{D_i^- + D_i^+}$$

$$V_1 = \frac{0,0544}{0,1196 + 0,0544} = \frac{0,0544}{0,174} = 0,3126$$

$$V_2 = \frac{0,0397}{0,1550 + 0,0397} = \frac{0,0397}{0,1947} = 0,2039$$

$$V_3 = \frac{0,0339}{0,1590 + 0,0339} = \frac{0,0339}{0,1929} = 0,1757$$

$$V_4 = \frac{0,0651}{0,1178 + 0,0651} = \frac{0,0651}{0,1829} = 0,3592$$

$$V_5 = \frac{0,0534}{0,1532 + 0,0534} = \frac{0,0534}{0,2066} = 0,2584$$

$$V_6 = \frac{0,1590}{0,0339 + 0,1590} = \frac{0,1590}{0,1929} = 0,8242$$

$$V_7 = \frac{0,0925}{0,0780 + 0,0925} = \frac{0,0925}{0,1705} = 0,5423$$

$$V_8 = \frac{0,0896}{0,0787 + 0,0896} = \frac{0,0896}{0,1683} = 0,5323$$

$$V_9 = \frac{0,0853}{0,0807 + 0,0853} = \frac{0,0853}{0,166} = 0,5138$$

$$V_{10} = \frac{0,0906}{0,0890 + 0,0906} = \frac{0,0906}{0,1796} = 0,5044$$

$$V_{11} = \frac{0,0575}{0,1154 + 0,0575} = \frac{0,0575}{0,1729} = 0,3325$$

$$V_{12} = \frac{0,0493}{0,1200 + 0,0493} = \frac{0,0493}{0,1693} = 0,2911$$

$$V_{13} = \frac{0,0989}{0,0745 + 0,0989} = \frac{0,0989}{0,1734} = 0,5703$$

$$V_{14} = \frac{0,0504}{0,1248 + 0,0504} = \frac{0,0504}{0,1752} = 0,2876$$

$$V_{15} = \frac{0,0989}{0,0745 + 0,0989} = \frac{0,0989}{0,1734} = 0,5703$$

From the results of the V value obtained the value of V3 = 0.1757 has the smallest value and V6 = 0.8242 has the greatest value as the best performance of the posyandu cadre. Results of testing the calculation of posyandu cadre performance with the topsis method applied using results in a ranking of criteria weight to obtain the alternative value that is selected as the best performance of posyandu cadres with an alternative value of 0.8242.

## V. CONCLUSION

Decision support system using the Technique For Order Preference By Similarity To Ideal Solution (TOPSIS) method in the making of an assessment model measures the performance of posyandu cadres in order to help and simplify the performance assessment of posyandu cadres based on the criteria that have been determined. Age, Education, Employment, Service Period and Achievement. Of the 5 criteria and 15 alternatives tested then the 6th alternative with a value of 0.8242 which states the performance of the best posyandu cadre while the third alternative with a value of 0.1757 states the lowest Posyandu cadre performance appraisal.

## REFERENCES

- [1] J. M. P. Sriyatty W. Sengkey, G. D. Kandou, "Analysis of Cadres Posyandu in Puskesmas Paniki Manado," *JIKMU*, vol. 5, no. 2b, hal. 419–501, 2015.
- [2] M. D. N. RI, *Peraturan Menteri Dalam Negeri Tahun 2011 Tentang Pedoman Pengintegrasian Layanan Dasar Di Pos Pelayanan Terpadu*. Indonesia, 2011, hal. 1–11.
- [3] M. Hasanudin, Y. Marli, dan B. Hendriawan, "Sistem Pendukung Keputusan Pemilihan Karyawan Terbaik Menggunakan Metode Analytical Hierarchy Process ( Studi Kasus Pada PT. Bando Indonesia )," in *SEMNASSTEKNOMEDIA*, 2018, vol. 6, no. 1, hal. 91–96.
- [4] S. M. Muhamad Muslihudin, Fauzi, Satria Abadi, Trisnawati, *Implementasi Konsep Decision Support System & Fuzzy Multiple Attribute Decision Making (Fmadm)*. Bandung: Penerbit Adab, 2021.
- [5] B. E. Turban, J. E. Aronson, dan T. Liang, *Decision Support System and Inteligent System*, 7th Ed. Ji. Yogyakarta: Penerbit Andi Yogyakarta, 2005.
- [6] E. Turban, J. E. Aronson, dan T.-P. Liang, *Decision Support Systems and Intelligent Systems*, 7th ed. Prentice Hall, 2004.
- [7] E. S. Susanto, Ferry, "Sistem Pengambilan Keputusan Penilaian Indek Kinerja Karyawan Dinas Pendapatan Kabupaten Pringsewu Dengan Pendekatan Weighted Product," *JTKSI*, vol. 01, no. 02, hal. 5–9, 2018.
- [8] L. Widagdo dan B. T. Husodo, "Pemanfaatan Buku KIA Oleh Kader Posyandu: Studi Pada Kader Posyandu Di Wilayah Kerja Puskesmas Kedungadem Kabupaten Bojonegoro," *Makara, Kesehat.*, vol. 13, no. 1, hal. 39–47, 2009.
- [9] D. N. Iswarawanti, "Posyandu Cadres: Their Roles And Challenges In Empowerment For Improving Children Nutritional Status In Indonesia," *J. Manaj. PELAYANAN Kesehat.*, vol. 13, no. 04, hal. 169–173, 2010.
- [10] S. Kusumadewi, S. Hartati, A. Harjoko, dan Retanto Wardoyo, *Fuzzy Multi-Attribute Decision Making (Fuzzy MADM)*. Yogyakarta: Graha Ilmu, 2013.
- [11] M. Muslihudin, D. Kurniawan, dan I. Widyaningrum, "Implementasi Model Fuzzy SAW Dalam Penilaian Kinerja Penyuluh Agama (Studi Kasus: Kementerian Agama Kabupaten Pringsewu)," *J. TAM ( Technol. Accept. Model )*, vol. 8, no. 1, hal. 39–44, 2017.
- [12] E. Y. Anggraeni, "Penerapan Metode Fuzzy Simple Additive Waighting ( FSAW ) Dalam Penentuan Perankingan Sekolah Menengah Kejuruan ( SMK ) Di Kabupaten Pringsewu," *SEMNASSTEKNOMEDIA*, vol. 5, no. 1, hal. 31–37, 2017.
- [13] M. Muslihudin, F. Triananingsih, dan L. Anggraeni, "Pembuatan Model Penilaian Indeks Kinerja Dosen Menggunakan Metode Fuzzy Simple Additive Weighting," *SEMNASSTEKNOMEDIA*, vol. 5, no. 1, hal. 25–30, 2017.
- [14] S. NĀdĀban, S. Dzitac, dan I. Dzitac, "Fuzzy TOPSIS: A General View," in *Procedia Computer Science*, 2016, vol. 91.
- [15] E. Roszkowska dan T. Wachowicz, "Application of fuzzy TOPSIS to scoring the negotiation offers in ill-structured negotiation problems," *Eur. J. Oper. Res.*, vol. 242, no. 3, 2015.

# Measuring The Performance of Posyandu

## ORIGINALITY REPORT

23%

SIMILARITY INDEX

20%

INTERNET SOURCES

12%

PUBLICATIONS

8%

STUDENT PAPERS

## PRIMARY SOURCES

1	<a href="http://www.ojs.stmikpringsewu.ac.id">www.ojs.stmikpringsewu.ac.id</a> Internet Source	11%
2	<a href="http://ojs.stmikpringsewu.ac.id">ojs.stmikpringsewu.ac.id</a> Internet Source	3%
3	"Decision Support System to Determine Qualified Corn using TOPSIS Method", International Journal of Engineering and Advanced Technology, 2019 Publication	2%
4	<a href="http://publikasi.mercubuana.ac.id">publikasi.mercubuana.ac.id</a> Internet Source	1%
5	"Decision Support System for Exemplary Teacher Selection in Elementary School using Topsis Method", International Journal of Engineering and Advanced Technology, 2019 Publication	1%
6	Fata Nidaul Khasanah, Adhistya Ema Permanasari, Sri SuningKusumawardani. "Fuzzy MADM for major selection at senior high school", 2015 2nd International	1%

# Conference on Information Technology, Computer, and Electrical Engineering (ICITACEE), 2015

Publication

---

7	jurnal.polgan.ac.id Internet Source	1 %
8	sciencepubco.com Internet Source	1 %
9	Fauzi, Rita Irviani, Muhamad Muslihudin, Fiqih Satria, Miftachul Huda, Natalia V. Kamenez, Andino Maseleno. "Revolutionizing Education through Artificial Intelligence: Fuzzy Multiple Attribute Decision Making Approach for Determining the Best Vocational High School", Applied Mechanics and Materials, 2019 Publication	<1 %
10	Submitted to Konsorsium Turnitin Relawan Jurnal Indonesia Student Paper	<1 %
11	Anita Hidayati, Fityan Aula Juyuspan, Cindy Novianty, D. S. Muhammad Bima. "Implementation of decision expert (DEX) in the "SALADGARDEN" application", 2017 4th International Conference on Electrical Engineering, Computer Science and Informatics (EECSI), 2017 Publication	<1 %

---

12

Fenina Adline Twince Tobing, Muhammad Iqbal Dzulhaq, Marlinda Vasty Overbeek, Eko Anto Setiawan. "Design of Decision Support System with C4.5 Algorithm Methods in Determining Results Vaname Shrimp Cultivation", 2019 5th International Conference on New Media Studies (CONMEDIA), 2019

Publication

<1 %

13

[journal.unimma.ac.id](http://journal.unimma.ac.id)

Internet Source

<1 %

14

[ijcsi.org](http://ijcsi.org)

Internet Source

<1 %

15

D M D U Putra, P A Pratama. "Decision support system selection of tender winners project development building of STMIK STIKOM Indonesia with TOPSIS method", Journal of Physics: Conference Series, 2020

Publication

<1 %

16

Submitted to Sriwijaya University

Student Paper

<1 %

17

Veby Kareth, David Paul Elia Saerang, Novi Swandari Budiarto. "Village financial management: Case study in "Kampung Srer"", Indonesia Accounting Journal, 2021

Publication

<1 %

Submitted to Wawasan Open University

18

Student Paper

<1 %

---

19

[www.mdpi.com](http://www.mdpi.com)  
Internet Source

<1 %

---

20

[www.ijournalse.org](http://www.ijournalse.org)  
Internet Source

<1 %

---

21

[gilaberistigfar14.blogspot.com](http://gilaberistigfar14.blogspot.com)  
Internet Source

<1 %

---

Exclude quotes Off

Exclude matches Off

Exclude bibliography Off

# Measuring The Performance of Posyandu

GRADEMARK REPORT

FINAL GRADE

**/0**

GENERAL COMMENTS

**Instructor**

PAGE 1

PAGE 2

PAGE 3

PAGE 4

PAGE 5

PAGE 6

PAGE 7

PAGE 8

PAGE 9

PAGE 10

PAGE 11

PAGE 12