

## **CHAPTER V**

### **CONCLUSION AND SUGGESTIONS**

In this chapter, the writer provides a conclusion and suggestions for this research after analyzing the effect of external conflict in the film *Fantastic Beasts: The Secrets of Dumbledore*.

#### **5.1 Conclusion**

After finishing an analysis of the effects of external conflict in the storyline of the film *Fantastic Beasts: The Secrets of Dumbledore* by using the external conflict theory by Kenney, the writer found three types of external conflict: Man vs man, Man vs society, and Man vs Nature.

In the film, there are two types of external conflict, Man vs Man and Man vs Society that play the entire storyline. By following some resources from the website [Masterclass.com](https://www.masterclass.com) and the effects of conflict definition by Harris, the writer concludes there are four effects of external conflict. First is creating tension and drama, as the tool to make an interesting storyline for the film. The second is revealing important aspects of the characters, that uncover the characters' motives, moral values, struggles, and identities. The third is contributing to the film's themes and messages, as the film brought up some social issues such as racism, homosexuality, and animal violence. And the last is to act a catalyst for character development which can be seen in the character Credence Barebone, and Albus Dumbledore.

In addition to the findings, the writer can draw conclusions that racism, animal violence, and tension as the negative effects of external conflict because those things bring harm to other people and creatures, not only in the film but also in real life. While the characters' motives, values, and development can be considered positive effects because those things can inspire the audience in real life.

To assume this statement, external conflict can have crucial impacts on a film's plot, characters, and topics. Through drama and tension, the external conflict uncovers the character's characteristics motivation, and values, investigating bigger social issues, and driving character development. External conflict can be an effective aspect for producers or filmmakers to engage, challenge, and give inspiration to the audience.

## **5.2 Suggestions**

According to the analysis of this research, there are some suggestions from the writer. This study is conducted by analyzing the types of external conflict in the film *Fantastic Beasts: The Secrets of Dumbledore*, then finding the effects that occurred because of the conflict happened in the storyline.

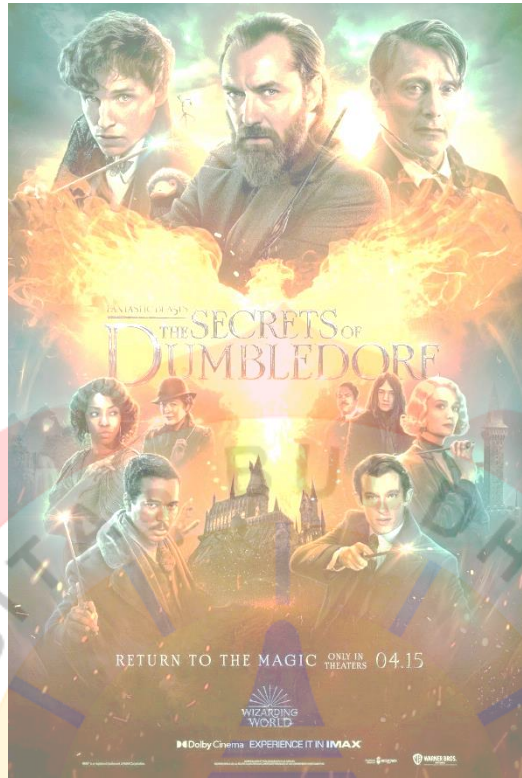
The writer advises the next researcher can conduct new research set up on certain characters in this film series, or from the previous and next series of the *Fantastic Beasts* films. As for the audience, the writer recommends they can understand the storyline and the characters better after learn about the external conflict and the effects that occurred in this film.

## REFERENCES

- Carroll, J. (1995). *Evolution and Literary Theory*. Missouri: University of Missouri Press.
- Creswell, J. W., & Creswell, J. D. (1994). *Research Design: Qualitative, Quantitative, and Mixed Methods Approaches*. London: Sage Publications.
- goodreads. (n.d.). Retrieved from www.goodreads.com:  
<https://www.goodreads.com/quotes/30083-literature-adds-to-reality-it-does-not-simply-describe-it>
- Hapizoh. (2021). External Conflict As Seen In The Film Aquaman By James Wan. *State Islamic University Sultan Thaha Saifuddin Jambi*.
- Harris, K. (2021, March 1). *Temple University*. Retrieved from Temple University Sites:  
<https://sites.temple.edu/creativewritingblog/2021/03/01/conflict/#:~:text=Conflict%20should%20affect%20the%20characters,which%20furthers%20their%20internal%20conflict.>
- Hornby, A. S. (2006). *Oxford Advanced Learner's Dictionary*. Oxford University Press.
- Kenney, W. P. (1966). *How To Analyze Fiction*. New York: Monarch Press.
- Laurenson, D., & Swingewood, A. (1972). *The Sociology of Literature*. New York: Shoken.
- Lukens, R. J. (2003). *A Critical Handbook of Children's Literature*. New York: Longman.
- Marcus, G., & Sollor, W. (2009). *A New Literary History of America*. Harvard University Press.
- MasterClass. (2021, September 30). *MasterClass*. Retrieved from masterclass.com:  
<https://www.masterclass.com/articles/what-is-conflict-in-literature-6-different-types-of-literary-conflict-and-how-to-create-conflict-in-writing>

- Patton, M. Q. (2002). *Qualitative Research & Evaluation Method*. California: Sage Publications, Inc.
- Robbins, S. P. (1998). *Organizational Behavior: Concepts, Controversies, Applications*. New Jersey: Prentice Hall.
- Sari, D. Y. (2013). A study of the main character's internal and external conflicts in Extremely Loud And Incredibly Close movie. *Universitas Brawijaya*.
- Soraya, K. N. (2018). An Analysis of the Main Character's Conflict in The Fault In Our Stars Novel By John Green. *Universitas Muhammadiyah Sumatera Utara*.
- StudySmarter. (n.d.). Retrieved from <https://www.studysmarter.co.uk:https://www.studysmarter.co.uk/explanations/english-literature/literary-elements/conflict/>
- West, R., & Turner, L. H. (2007). *Introducing Communication Theory: Analysis and Application*. New York: McGraw-Hill.
- Yates, D. (Director). (2022). *Fantastic Beasts: The Secrets of Dumbledore* [Motion Picture].

## SYNOPSIS



In Muggle tearoom, Gellert Grindelwald and Albus Dumbledore confess their shared emotions. Dumbledore calls Grindelwald's plan to destroy the muggle world insane and claims that the only reason he originally backed it was because he was inexperienced and naive. Grindelwald swears to do what he wants no matter what.

In Kweilin, China, in 1932, Newt Scamander assists in the birth of a Qilin, a magical being with the ability to perceive one's soul as well as the future. The mother is attacked and killed by Credence and his followers, who subsequently steal the infant. To use the creature's capacity for foresight, Grindelwald kills it. They were unaware that the Qilin were parents of twins; Newt saved the younger of the two.

Albus Dumbledore, unable to confront Grindelwald because of a blood pact they made, enlists Newt, his brother Theseus, Lally Hicks, Senegalese-French wizard Yusuf Kama, American No-Maj Jacob Kowalski, and Newt's assistant Bunty to stop Grindelwald's plan to rule the world. They go to Berlin, where Yusuf is infiltrated by Grindelwald's inner circle as a spy. Grindelwald is permitted to run for Supreme Leader of the International Confederation of Wizards (ICW) despite Dumbledore's efforts to convince current Leader Anton Vogel otherwise because the ICW clears him of all prior criminal accusations.

Newt is sent by Dumbledore to the Erkstag, the underground German wizarding jail where Theseus is being kept. After stopping the assassination, Lally and Jacob are able to flee, but Jacob is falsely accused of trying to kill Grindelwald, who subsequently justifies the suppression of all Muggles. Albus Dumbledore engages Credence in combat, but the latter is quickly victorious. When Credence discovers he is related to Dumbledore's family, he begins to doubt Grindelwald's commitment.

In Bhutan, magical world leaders assemble for the Walk of the Qilin ceremony, when a Qilin will choose a deserving new Supreme Leader. With the knowledge that Dumbledore and Newt will bring the living twin Qilin to the ritual, Grindelwald uses necromancy to reanimate the deceased Qilin and offers Credence one final opportunity to prove himself. Each Dumbledore ally carries a similar suitcase, with the exception of the one carrying the Qilin, in an effort to foil Grindelwald's minions.

When the team reaches Bhutan, Grindelwald's followers confront them right away. Queenie breaks her allegiance to Grindelwald and rejoins Jacob, but they are discovered. Grindelwald is selected as the Supreme Leader by the deceitfully deceased Qilin. Until Santos steps in, he immediately swears war on all Muggles and torments Jacob with the cruciatus curse. Bunty, Credence, and Newt reveal Grindelwald. The remaining Qilin is produced by Bunty, who is in possession of the real suitcase. It walks by Grindelwald and Vogel before bowing to Dumbledore. Dumbledore thanks the Qilin for the honor but informs it that there is somebody who is just as deserving after being startled. Santos is chosen as the new Supreme Leader, and the Qilin then bows before her. Grindelwald attacks Credence while being stopped by Albus and Aberforth in a fit of fury.

The blood pact is broken by the clashing spells of Dumbledore and Grindelwald. The subsequent conflict comes to a standstill, and Grindelwald vanishes.

Aberforth finally showed himself in front of Credence, and told him, he is his son and brings him home. At Jacob's bakery, Tina Goldstein and the majority of the team attend the marriage of Jacob and Queenie. Dumbledore is observing from across the street, and Newt sees him. Newt is thanked by Dumbledore before he leaves for the evening.



## CURRICULUM VITAE

Name: Meysa Arifin  
Date of birth: May, 16th 1996  
Address: Poris Indah, Tangerang  
Education:



1. SD Angela – Jakarta
2. SMPN 264 – Jakarta
3. SMK Mawar Sarion – Tangerang
4. Universitas Buddhi Dharma – Tangerang

Job experiences:

1. Preschool Teacher (Nusa Hijau Pre-School)
2. Coding tutor (coding bee academy)
3. Preschool Teacher (Apple Tree Pre-School)

